



LESSONS LEARNED

Incident ID	AU.LHAPMW.ACTUAL.300124.00182112	Incident Date	30 January 2024
Incident Circumstance	Fall of Materials	Workplace Activity	Internal Façade Cladding
Operation	Liverpool Health & Academic Precinct Main Works	Issued By	Andrew Hereth

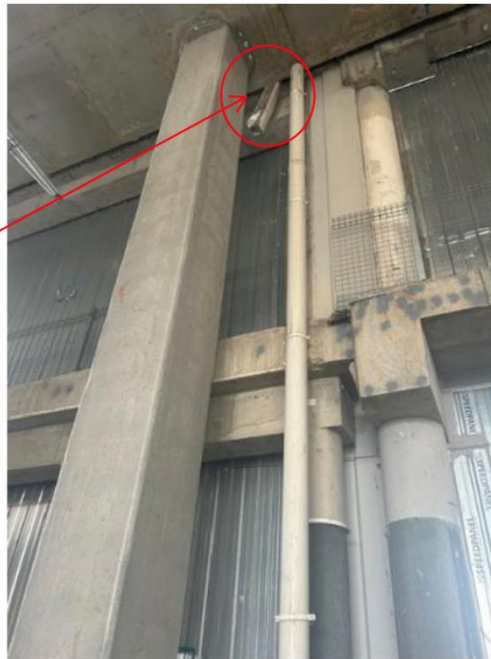
Description of Incident

A bundle of Galva bond sheeting (25 sheets at 1200x 2400mm) fell approximately 8.4m through a fire rated movement joint and landed in a material storage zone on the level below.

The sheets were stored against an adjoining plasterboard wall and on top of the movement joint when the expansion jointing material gave way.

The expansion joint was originally covered with ply and works had commenced to install fire rated materials in the joint and permanent movement joint covers. These works were paused due to noise issues; however, the temporary ply covers were not reinstated to protect the penetration. Subsequently, the partitions contractor moved the sheets, placing them directly over the joint.

Incident location where material stacked onto fire rated joint and fell through 100mm expansion joint gap from level 2 down to ground floor



Key Learnings

The integrity of penetration covers must be maintained and where works are incomplete, temporary protection is to be reinstated, with the work area inspected to ensure that it is safe.

Bundles of sheeting material should not be stored vertically against walls or other structures. Material should be stored flat on the ground or in an engineered storage rack.

GMR Reference

GMR 4.2 – Fall of Materials